



# Erosion in our Estuaries



# Today's Schedule

- Estuary types
- Ecological Services
- Identifying Estuarine Shoreline Types
- Shoreline Erosion Testing
- Shoreline Construction Competition





# North Carolina

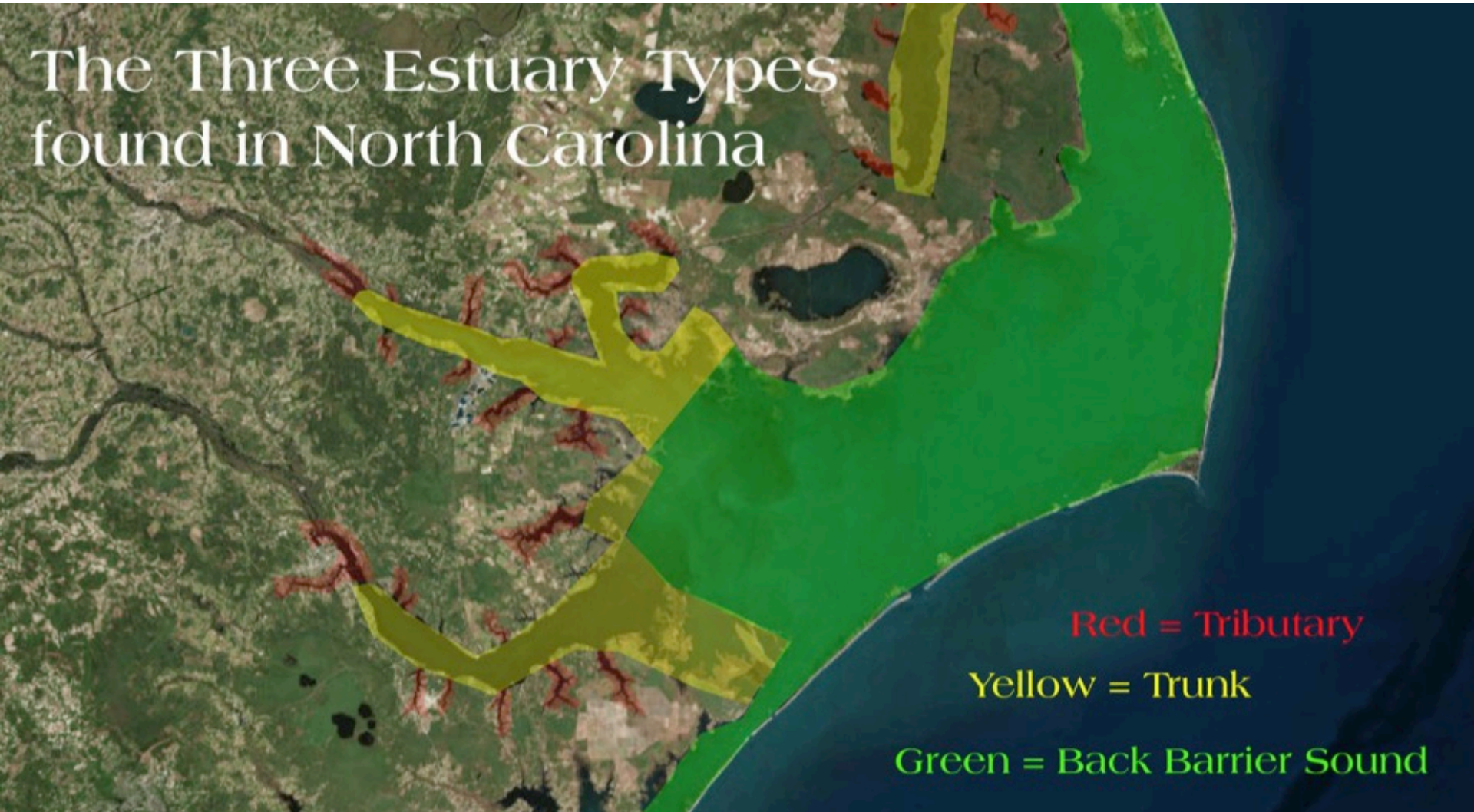
A satellite-style map of North Carolina showing the state's coastline. The land is green and brown, and the ocean is dark blue. Red lines trace the intricate, highly indented coastline, representing the estuarine shoreline. White lines follow the outer edge of the state, representing the ocean shoreline. The map highlights the extensive and complex nature of the state's coastal boundaries.

- 325 miles of ocean shoreline
- 12,000 miles of estuarine shoreline



# Estuary Types

The Three Estuary Types  
found in North Carolina



Red = Tributary

Yellow = Trunk

Green = Back Barrier Sound

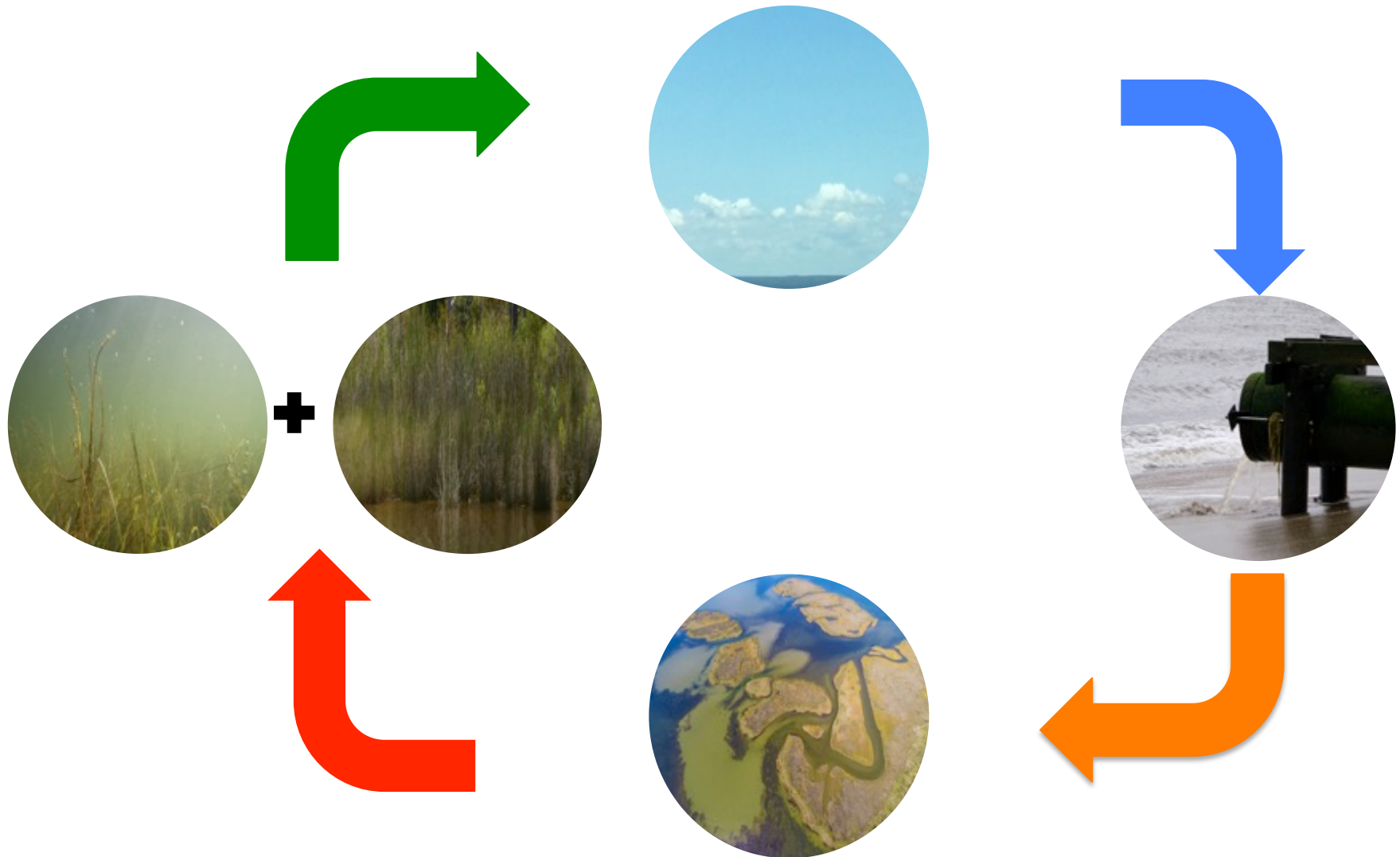
# Ecological Services

- Fisheries





# Nitrogen Cycle



# Ecological Services

- De-nitrification



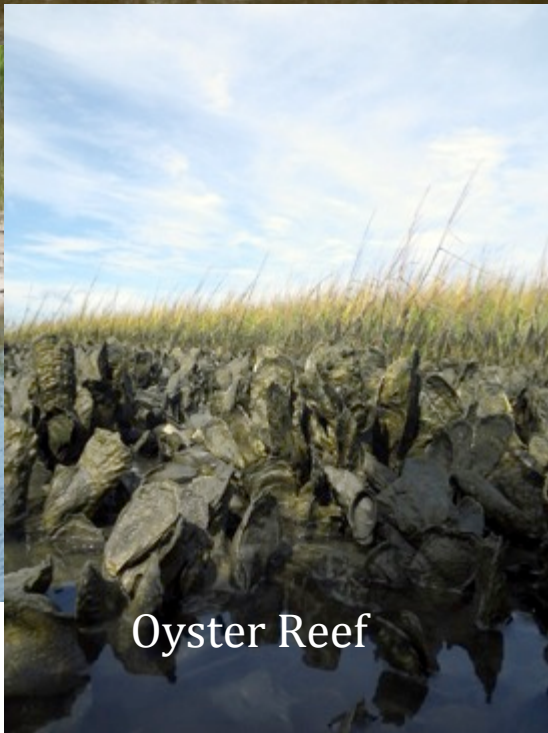


# Coastal Processes





# Natural Estuary Shorelines





# Modified Shorelines





# Erosion In Our Estuaries



# Shoreline Video

- <https://www.youtube.com/watch?v=b0873YbVX0>